

Respiratory System

Thursday Review Session

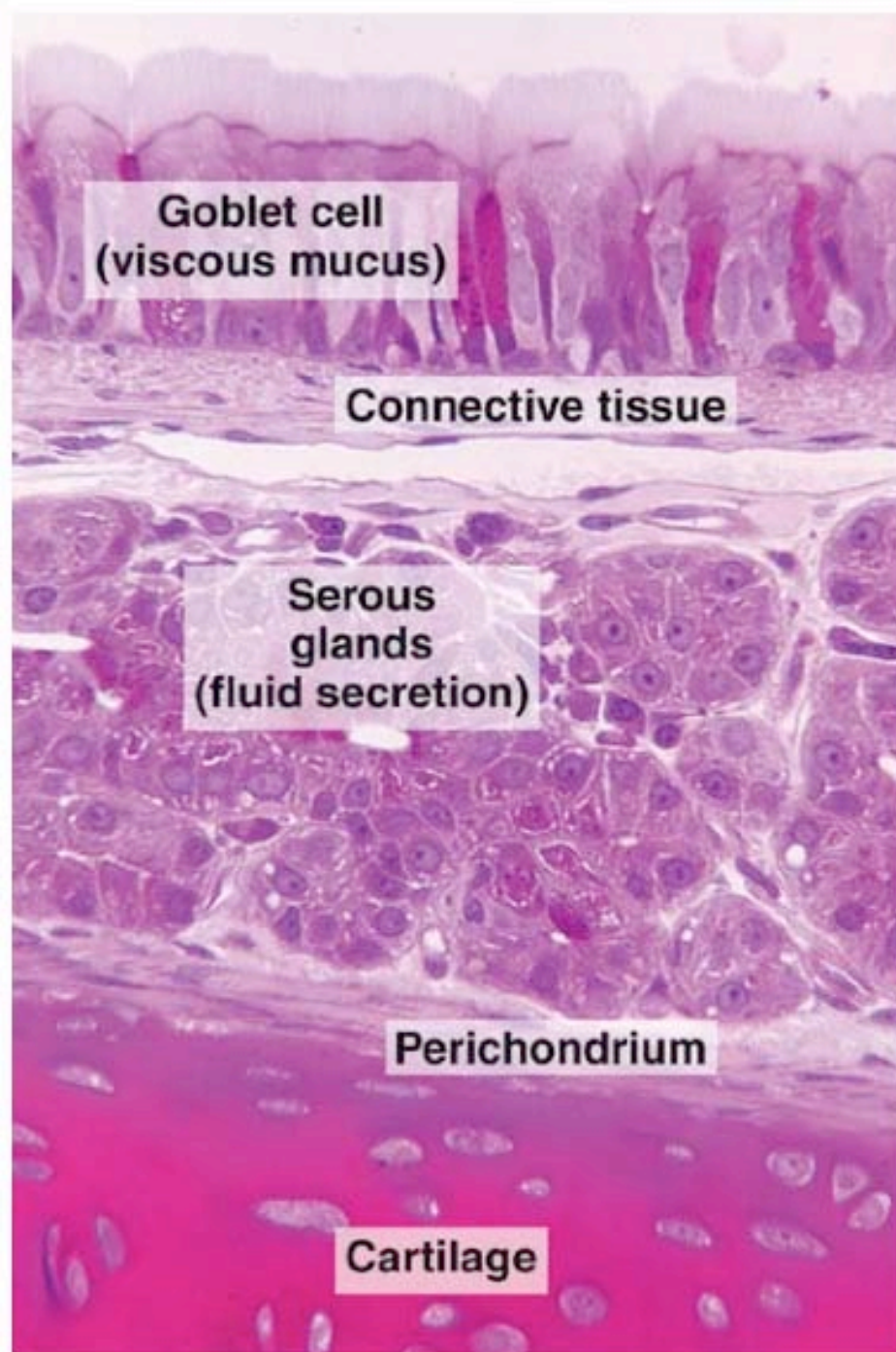
March 1, 2007

I. Conducting portion

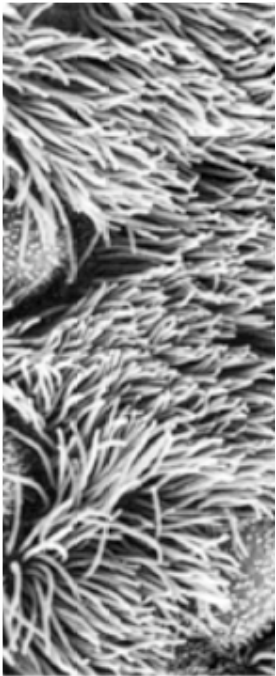
- a. transfer air to alveoli and clean it
- b. hyaline cartilage, columnar epithelium transitioning to cuboidal, ciliated cells and brush cells

II. Respiratory portion

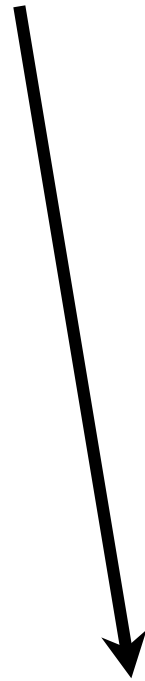
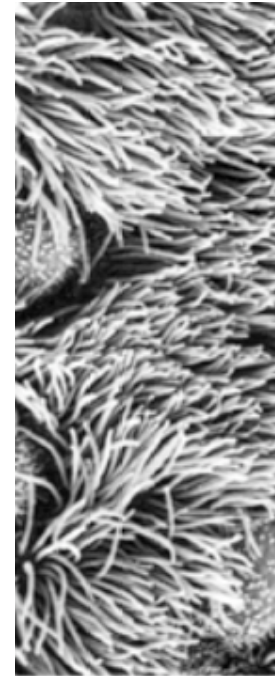
- a. gas exchange
- b. alveoli, little cartilage, immune cells, elastic fibers, squamous cells in epithelium



Trachea

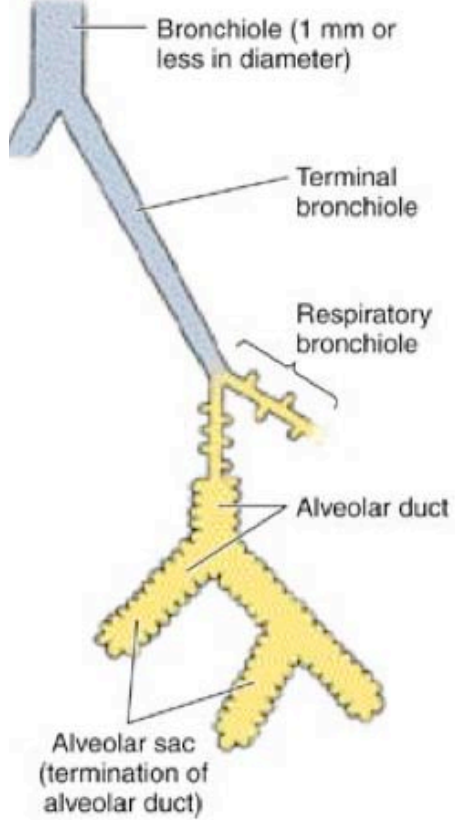
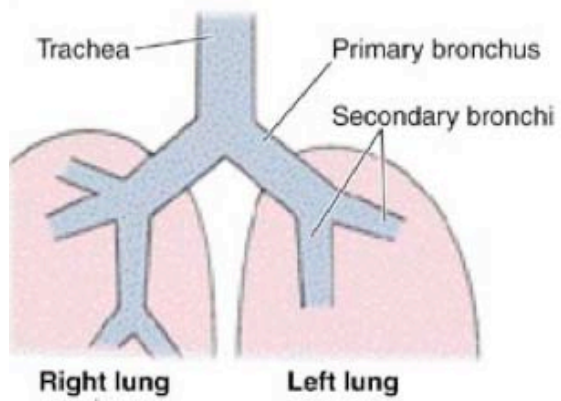


Trachea



Respiratory Tract





Large
Bronchus



Bronchiole



Respiratory
Bronchiole

