

Review Session

Lymphoid Organs

Cells of Lymphoid Organs

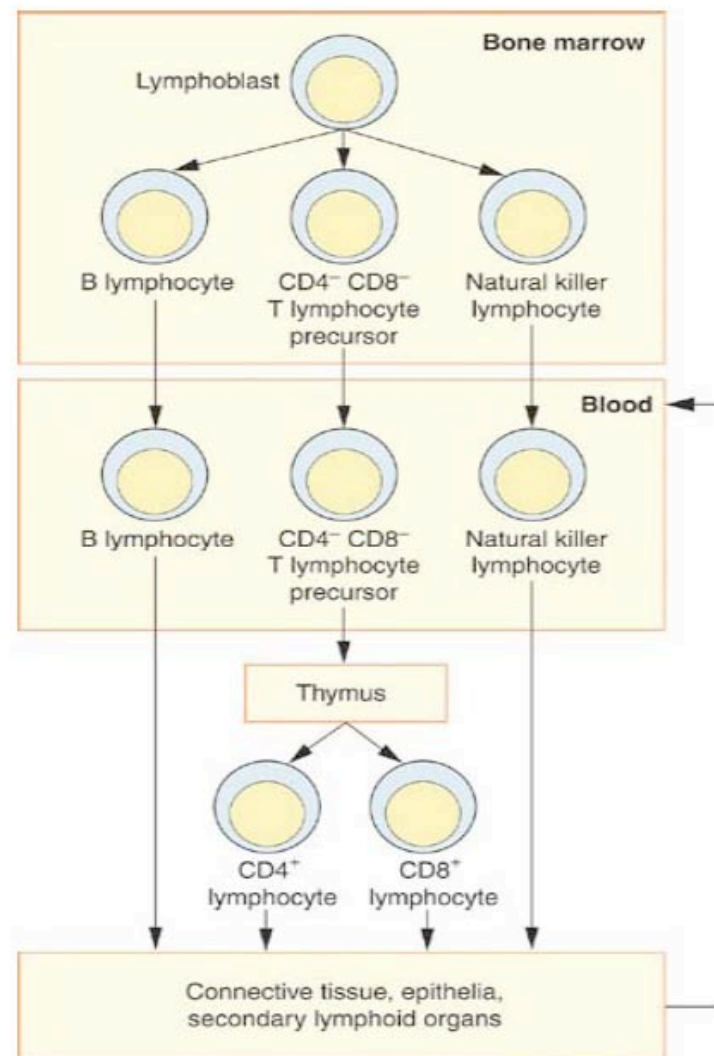


Figure 14-04
Origin of
lymphocyte cell
types

T lymphocytes
mediate **cellular**
immune response

- T cells migrate and
mature in thymus

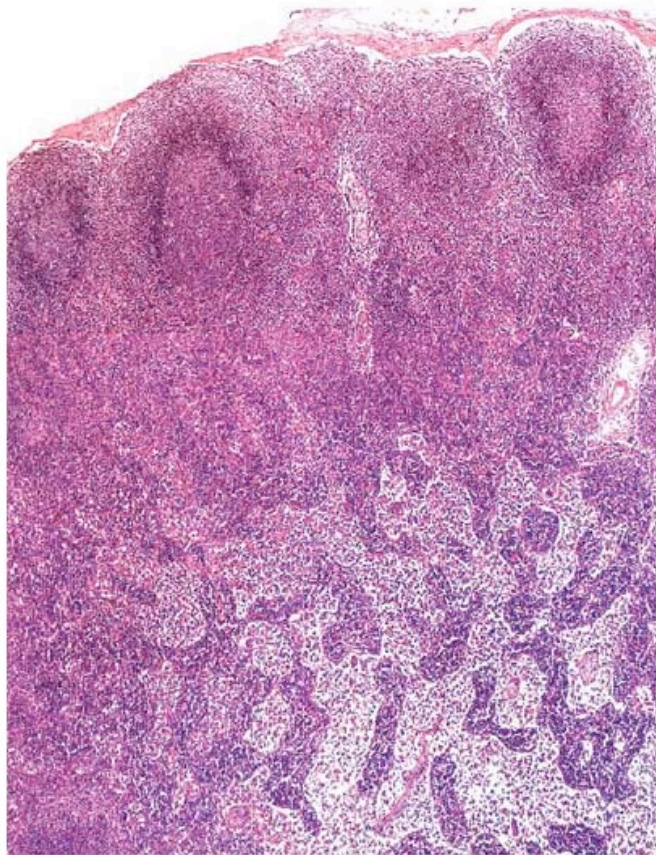
B cells involved in
humoral immune
response – produce
antibodies

- B cells mature in
bone marrow

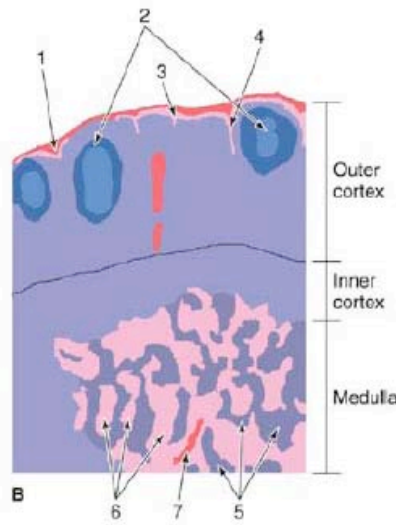
Peripheral lymphoid tissues

- Lymph nodes
- Spleen
- Unencapsulated lymphoid tissue – tonsil, Peyer's patch, appendix

Lymph Node



A



Cortex – follicles have
B cell, lymphocytes,
macrophages, T cells

Medulla – plasma cells
and immunoblasts;
sinuses have
macrophages and
lymphocytes

Figure 14-21: Histology of a lymph node

Spleen

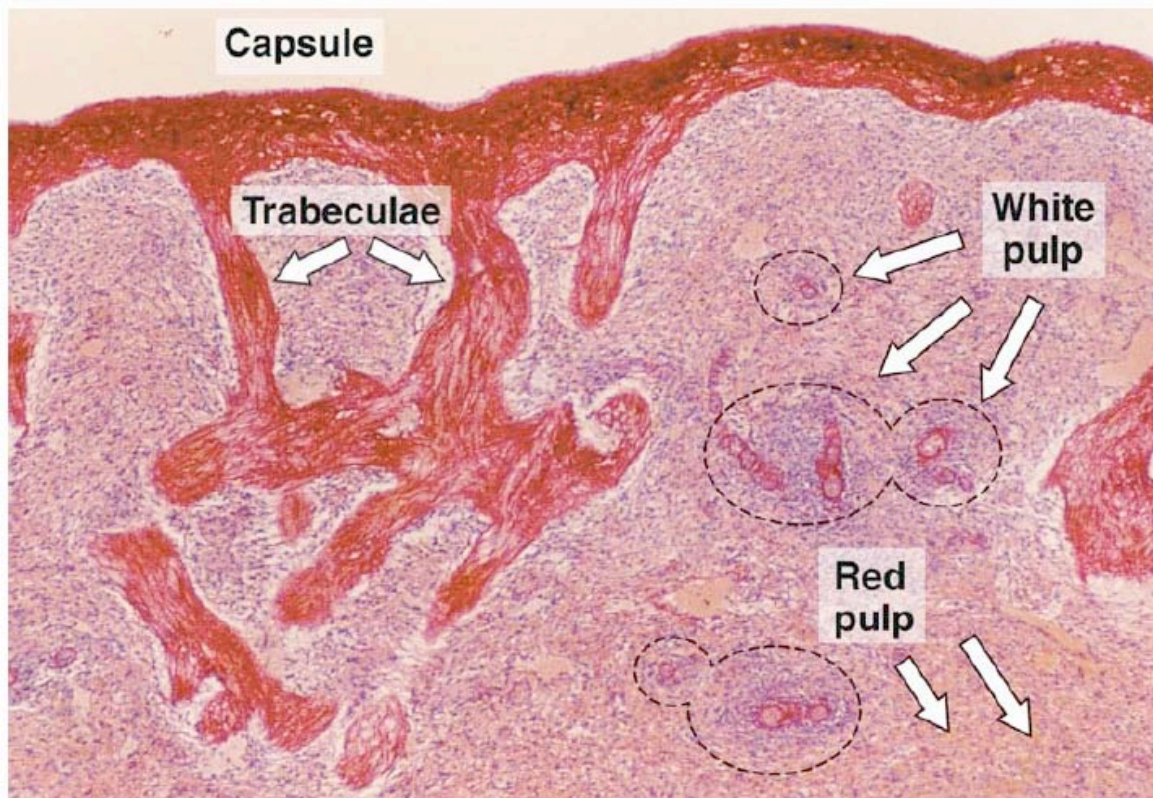
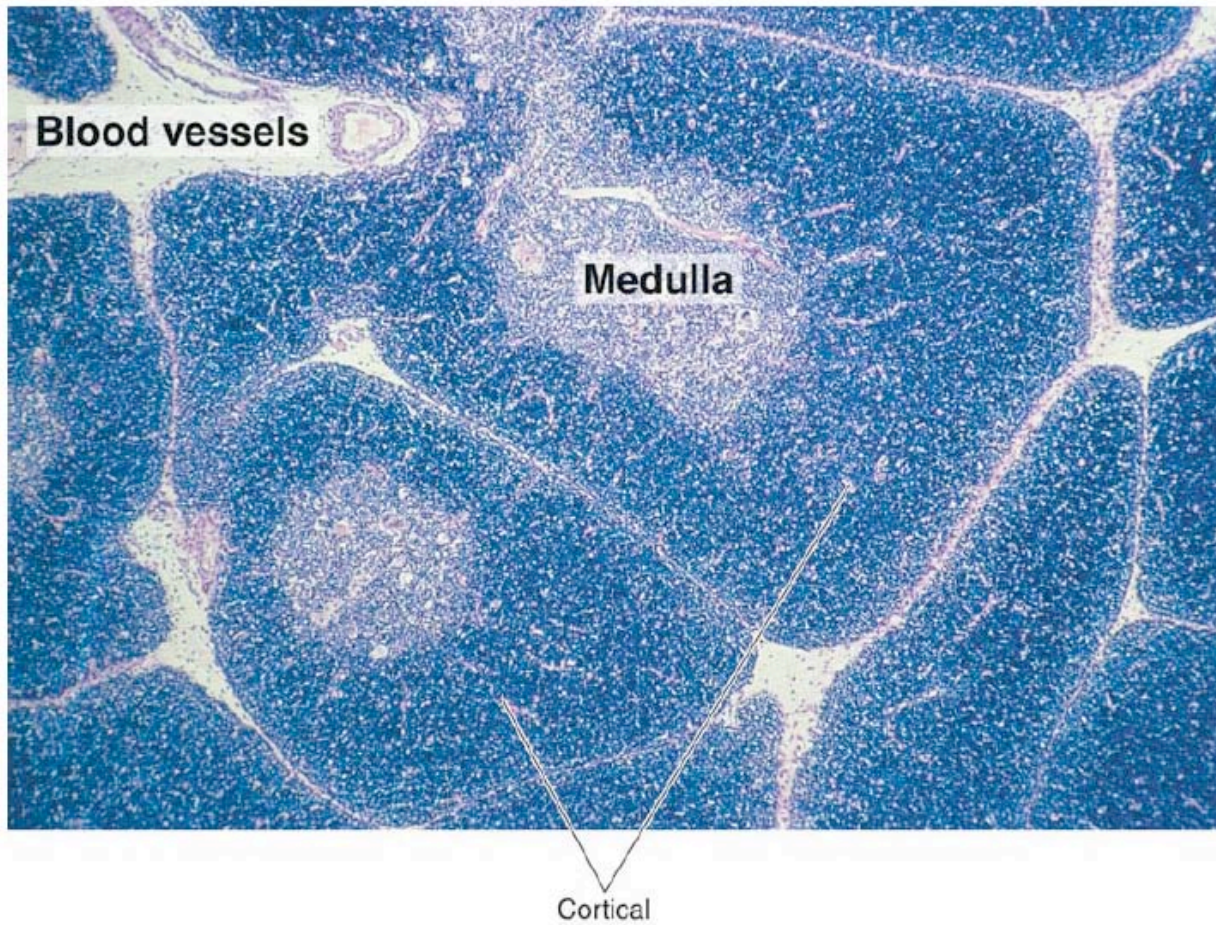


Figure 14-27: Histology of the spleen

White pulp –
immune response
against blood-borne
antigens

Red pulp –
monitoring blood
cells, reservoir for
platelets

Thymus



Lobules: immature lymphocytes (aka thymocytes), reticular cells, macrophages

Figure 14-14: Lobules of the thymus